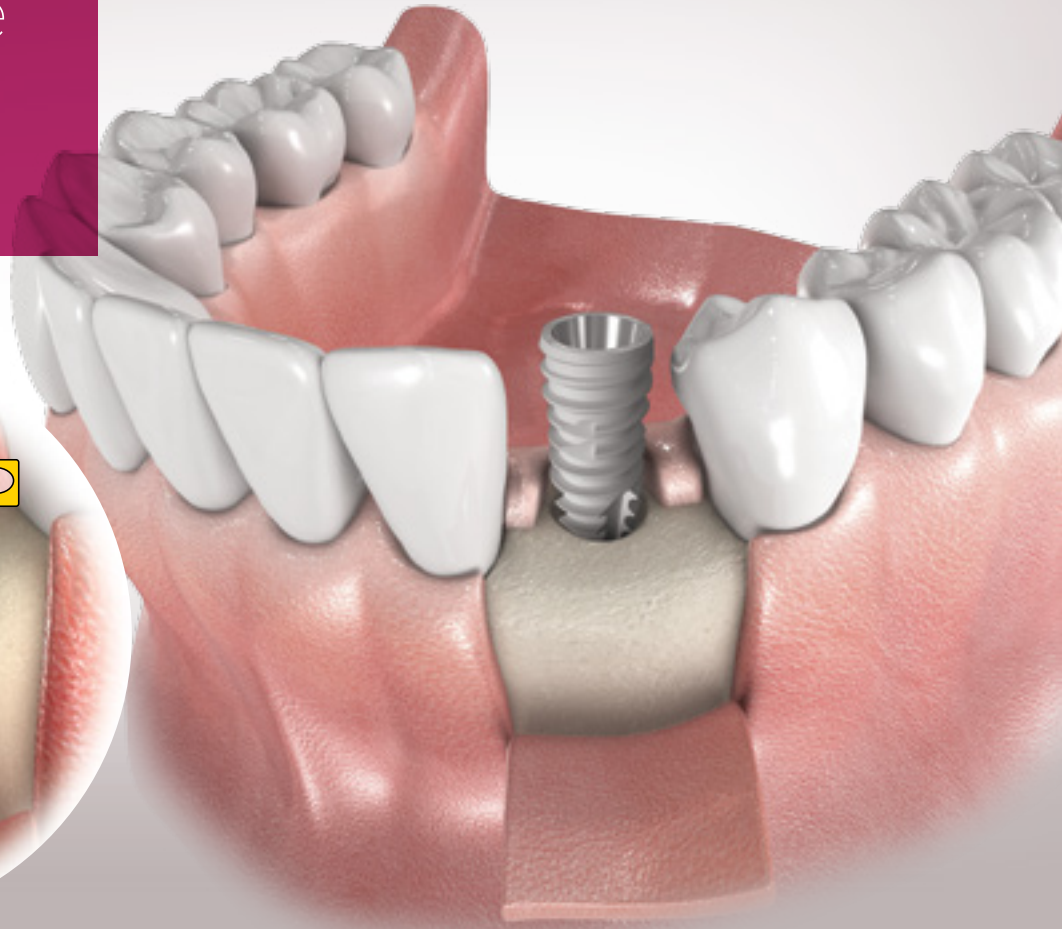


IS-III active



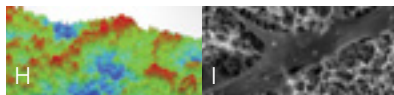
IS-III active implant is structured to maximize initial stability and facilitate faster osseointegration with its scientifically proven SLA surface and fixture body design

Connection

- A. Thicker Platform
- B. Anti-screw Loosening
- C. Abutment Compatibility

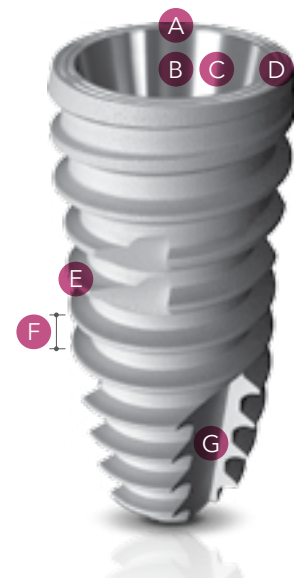
Surface

- H. S.L.A. Surface
- I. Cell Adhesion Ability



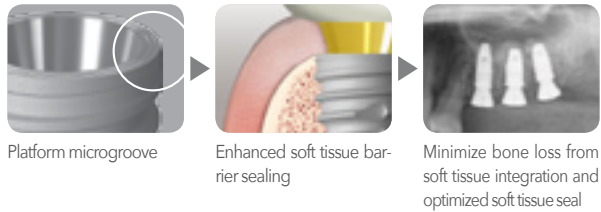
Design

- D. Platform Microgroove
- E. Magic Threads
- F. 0.9 Pitch
- G. Wide Cutting Edge

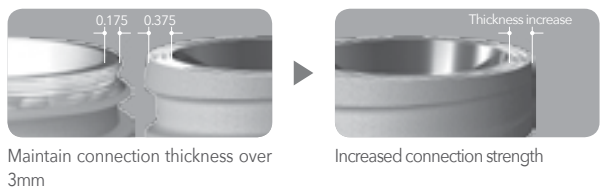


Microgroove & Connection

Minimize Bone Loss

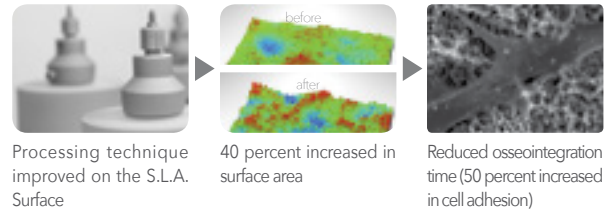


Stronger Connection



S.L.A Surface

Facilitate Osseointegration



Wide Cutting Edge

Ideal Initial Fixation



0.9 Pitch

Minimize Bone Compression



IS-III active placement in the posterior mandible



IS-III active fixtures were placed in #45, 46, and 47 with ITV between 35 to 45Ncm. 3 months after surgery, a definitive 3-unit zirconia SCRPFDP were delivered.

